

CEM VICTOR INTEGRATION DRIVER SERVICE

Installation and configuration guide

Notice

The information in this manual was correct at the time of publication. Tyco Security Products reserves the right to modify this product. All specifications are subject to change without notice.

© Copyright 2017

Under copyright laws, the contents of this manual may not be copied, photocopied, reproduced, translated or reduced to any electronic medium or machine-readable form, in whole or in part, without prior written consent of Tyco Security Products. All Rights Reserved.

Trademarks

The trademarks, logos, and service marks displayed on this document are registered in the United States (or other countries). Any misuse of the trademarks is strictly prohibited and Tyco Security Products will aggressively enforce its intellectual property rights to the fullest extent of the law, including pursuit of criminal prosecution wherever necessary. All trademarks not owned by Tyco Security Products are the property of their respective owners, and are used with permission or allowed under applicable laws.

Product offerings and specifications are subject to change without notice. Actual products may vary from photos. Not all products include all features. Availability varies by region. Contact your sales representative for more information.

License information

Your use of this product is governed by certain terms and conditions.

Support

If you require technical assistance using CEM products, please contact the CEM Support team using the following telephone number:

Telephone: +44(0)2890 456656

Email: cem.support@tycoint.com

- Please provide our support engineers with as much information as possible. This may include:
- Site name
- Product name and model
- CEM software version
- Description of the problem

Publication Date

September 2017

Introduction	5
Introduction to the CEM Victor Integration Driver Service.	5
About this guide	5
Overview of CEM Victor Integration Driver Service	5
 Installing CEM Victor Integration Driver Service	 9
Prerequisites	9
Installing the CEM Victor Integration Driver Service	9
 Configuring AC2000	 11
Overview	11
Granting access to External Systems	11
Opening External Systems	11
Adding External Systems alarms for use with the CEM Victor Integration	12
Confirming successful installation and configuration	14
Configuring CEM readers in Victor Unified Client	15
 Mapping alarms in Victor Unified Client	 17
 Configuring Victor maps	 23
 Upgrading the CEM Victor integration	 27
 Additional tasks	 29

Chapter 1

Introduction

1.1 Introduction to the CEM Victor Integration Driver Service

Victor is a video management interface produced by American Dynamics (AD). Use Victor to manage live and recorded video from multiple DVR types.

The **CEM Victor Integration Driver Service** displays live video in the **Victor Unified Client** when an AC2000 alarm is triggered.

The AC2000 system sends triggered alarms to Victor. These also include alarms from third-party intrusion systems integrated with the AC2000 system.

You can also send commands such as **Unlock Door**, **Lock Door**, and **Oneshot Door** to AC2000 card readers from the **Victor Unified Client**.

1.2 About this guide

This guide describes how to perform the following tasks:

- Install the **CEM Victor Integration Driver Service**.
- Configure **Victor Server Configuration Application** to use **CEM Victor Integration Driver Service**.

1.3 Overview of CEM Victor Integration Driver Service

You can install the **CEM Victor Integration Driver Service** on two types of workstation:

- A workstation with a **Victor Server Configuration Application** and a **Victor Unified Client** installed.
- A workstation with a **Victor Unified Client** installed and remotely connected to a **Victor Server Configuration Application**.

For an installation overview for each scenario, see Figure 1 and Figure 2.

1.3.1 Installing CEM Victor Integration Driver Service

The following graphic describes the installation of the **CEM Victor Integration Driver Service**.

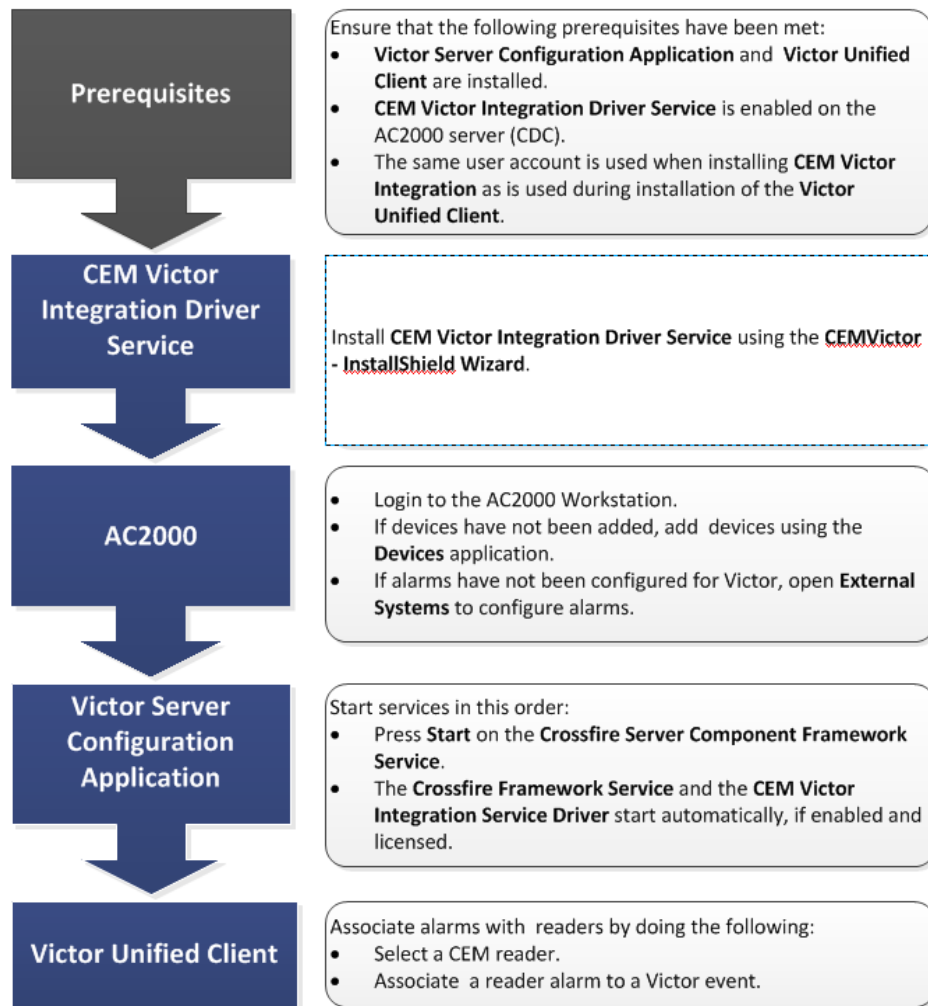


Figure 1 CEM Victor Integration

1.3.2 Overview for a Victor Unified Client only workstation

The following graphic describes the installation procedures for the **Victor Server Configuration Application** and **Victor Unified Client** on different workstations.

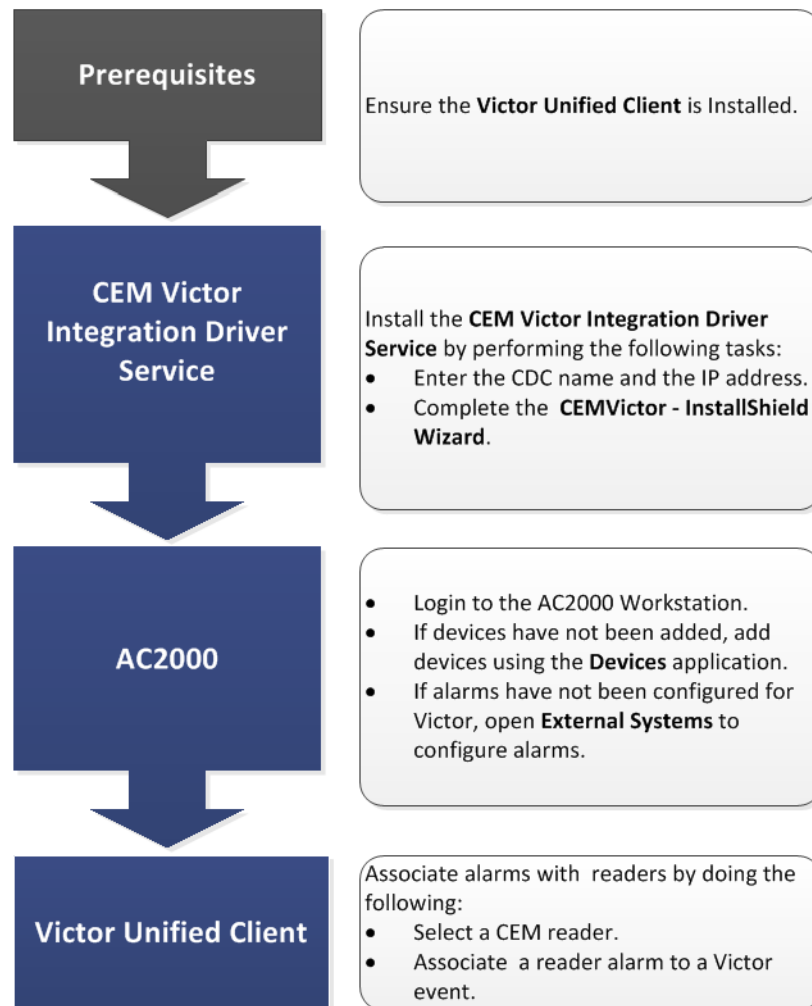


Figure 2 The Victor Server Configuration Application is on a different workstation

Chapter 2

Installing CEM Victor Integration Driver Service

2.1 Prerequisites

Before installing the **CEM Victor Integration Driver Service**, ensure the following prerequisites are met:

- The same user account is used when installing **CEM Victor Integration** that was used during installation of the **Victor Unified Client**.
- The **Victor Unified Client** and **Victor Server Configuration Application** are installed.
- An AD Victor licence that includes the **CEM Victor Integration Driver Service** has been obtained from the American Dynamics (AD) website.
- The AD Victor licence has been applied through AD's Victor Licensing application.
- The CEM Victor Integration service is enabled. For more information, see *Enabling the CEM Victor Integration*.

2.2 Installing the CEM Victor Integration Driver Service

To install the driver service, complete the following steps:

1. Insert the CEM Victor Integration CD into the CD-ROM drive. If the setup program does not automatically start, open Windows Explorer, and navigate to the CD drive. Right-click **CEMVictorSetup.exe** and select **Run as Administrator**.
2. Click **Next** to start the **CEMVictor - InstallShield Wizard**.
The **Victor Server Configuration Application** closes and stops all services. Manually start these services when the installation is complete.
3. In the **CDC Information** window, type the AC2000 server name into the **CDC Name** field.
Note: If the CDC name was not changed in the AC2000 server setup, the default is **cdc0**.
4. In the **IP Address** field, type the IP address of the AC2000 server.
5. Click **Next** to continue.
6. In the **Database Server** window, ensure that **Windows authentication credentials of current user** is selected. Click **Next**.
7. Click **Install** to start the installation.
8. Click **Finish** to complete the installation. The **CEM Victor Integration** is installed.

Chapter 3

Configuring AC2000

3.1 Overview

To configure AC2000, complete the following steps:

1. Grant the user access to the AC2000 application External Systems. For more information, see *Granting access to External Systems* on page 11.
2. Open External Systems. For more information, see *Opening External Systems* on page 11.
3. Add External Systems alarms for use with the CEM Victor Integration. For more information, see *Adding External Systems alarms for use with the CEM Victor Integration* on page 12.

3.2 Granting access to External Systems

To give a user access to External Systems, complete the following steps:

1. From **AC2000 Floatbar**, click **Administration**, and click **User Options**.
2. Select the user from the list in the left pane.
3. Double-click the username.
4. Click the **Applications** tab.
5. Select **External Systems** from the **Not Selected** pane.
6. Click **Save**. The application moves to the **Selected** pane and the user can now use **External Systems**.

Note: If the **External Systems** application does not appear in the **Device Configuration** pane of the **Floatbar**, log out of the **Floatbar**, and log in again.

3.3 Opening External Systems

Use External Systems to link to other systems.

To open the application, complete the following step:

- From **AC2000 Floatbar**, click **Device Configuration**, and click **External Systems**.

3.4 Adding External Systems alarms for use with the CEM Victor Integration

To add External Systems alarms, complete the following steps:

1. In **External Systems**, select **Victor** from the **Select System** drop-down list.
2. Click **Add** to display the **Add Action** window.
3. From the **Select Alarm** list, select an alarm.
4. From the list of devices, select the device to which you want to assign the alarm.
Note: The device must have inputs configured for certain alarms, for example, Panic alert, Door Forced alert, General alert, Break Glass alert, and Fire alert. Use the Devices application to configure device inputs.
5. The **Set** field is automatically populated for Victor alarms. It can be manually overwritten. For more information, see *Alarm codes*.
6. Click **Save**.

3.4.1 Alarm codes

The table describes the alarm codes for use in the AC2000 application External Systems and Victor Unified Client.

Alarm code	Description
Access control Alarms	
10	Duress Alert
11	Tamper Alert
12	Lost Stolen Alert
13	Offline Alert
14	Door Held Alert
15	Panic Alert
16	Door Forced Alert
17	General Alert
18	Pin Alert
19	Break Glass Alert
20	Fire Alert
21	Intercom Alert
Intruder Alarms	
30	SIA Tamper Alert
32	SIA Holdup Alert
34	SIA Panic Alert
36	SIA Burglary Alert
38	SIA Galaxy Alert
Generic Reader Alerts via Victor alarm priority	
0	General Alarm 1
1	General Alarm 2
2	General Alarm 3
3	General Alarm 4
4	General Alarm 5
5	General Alarm 6
6	General Alarm 7
7	General Alarm 8

Table 1: Alarm codes for use in AC2000 External Systems and Victor Unified Client

3.5 Confirming successful installation and configuration

Start **Victor Unified Client** to confirm that **CEM Victor Integration Driver Service** is installed and configured successfully.

To confirm a successful integration, complete the following steps:

1. Open **Victor Unified Client**.
2. Confirm that all CEM Readers with **External Systems** alarms configured are displayed under the **Readers** branch in the Victor device tree.

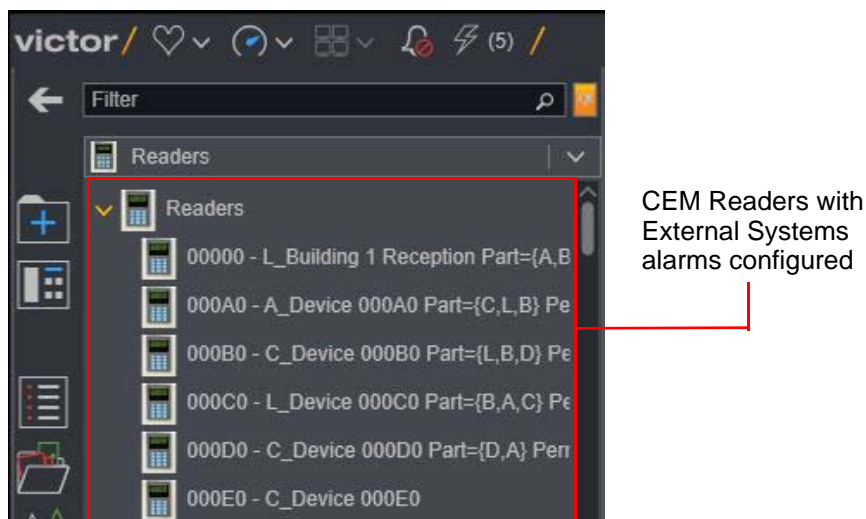


Figure 3 Device tree in Victor Unified Client

Note: Only devices with External Systems alarms configured appear here.

3. Right-click a CEM Reader in the Victor device tree to display a list of readers.
4. Right-click a CEM Reader in the device list to display a list of Reader commands.

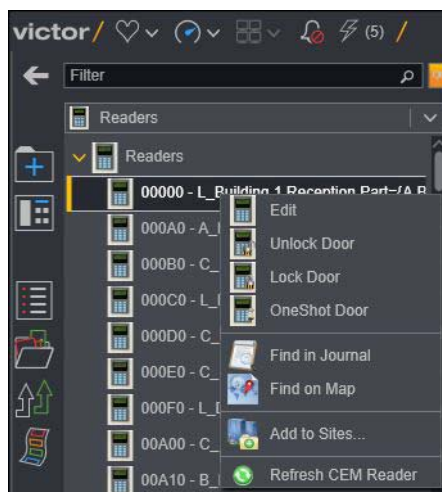


Figure 4 Reader commands

5. Select a command to send to a CEM Reader, for example, **Oneshot Door**.

3.6 Configuring CEM readers in Victor Unified Client

For more information about Victor Unified Client features, for example, video actions, display actions, and event actions, to External Systems alarms generated by CEM Readers in Victor Unified Client, see the relevant Victor manuals.

Note: Guidance notes in Appendix A should be used only to configure limited actions related to CEM Readers. Refer to the Victor instruction manual for full instructions.

Appendix A: Mapping alarms in Victor Unified Client

Overview

To map AC2000 alarms to Victor events, complete the following steps:

1. Create a salvo.
2. Create a video action.
3. Create an event.
4. Set up an event.
5. Test the integration.

Note: You can display CEM readers on a Victor map. For more information, see *Configuring Victor maps*.

Creating a salvo

To create a salvo, complete the following steps:

1. From the **Victor Unified Client** interface, click the **Create item** icon, as shown in Figure 5, and select **Salvo**.

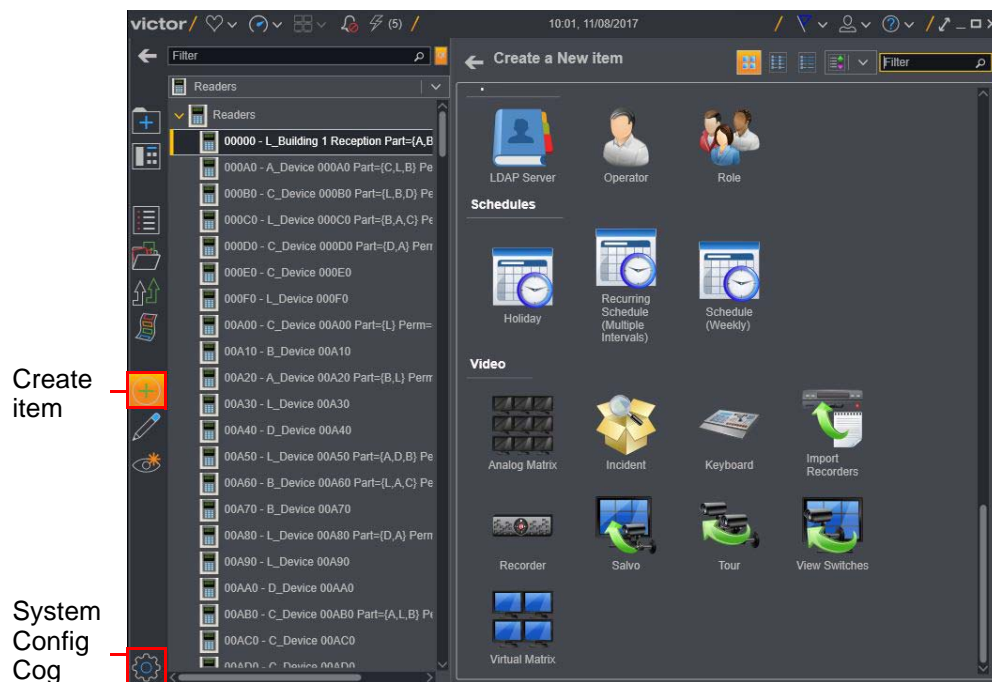


Figure 5 Creating a salvo in the Victor Unified Client

- Click **Salvos** and select **New** to display a **New Salvo** interface.

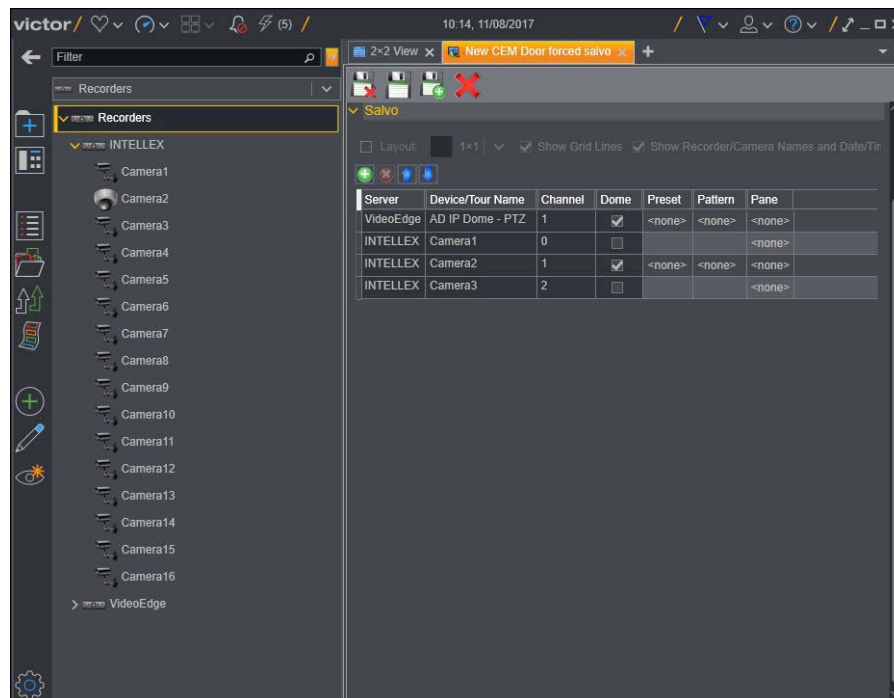


Figure 6 Creating a new salvo

- Configure the **General** parameters.
 - In the **Name** field, type the name of the salvo.
 - In the **Description** field, type a description of the salvo.
 - Select the **Enabled** check box.
- Configure the **Salvo** parameters.
 - Click the **Recorders** tab.
 - Expand the drop-down list of cameras for one of the listed recorders.
 - Drag cameras from the **Recorder** tab to the Salvo details pane.
- Select the **Layout** check box to set a layout for the camera display.
- Select a layout, for example, **2x2**.

Note: When you select a layout, each camera in the salvo is automatically assigned to a layout pane. Pane numbers are displayed in the **Pane** column.

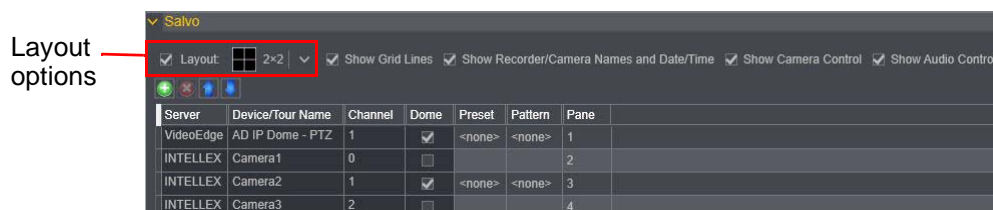


Figure 7 Salvo details pane

Note: You can reassign cameras to different panes, if required. For more information, see AD's **victor Unified Client / victor Application Server Administration and Configuration Guide**.

- Click the **Save and Close** icon.

Creating a video action

To create a video action, complete the following steps:

1. Open **Victor Unified Client**.
2. Click the **Create item** icon, as shown in Figure 8, and select **Display Salvo Action**.

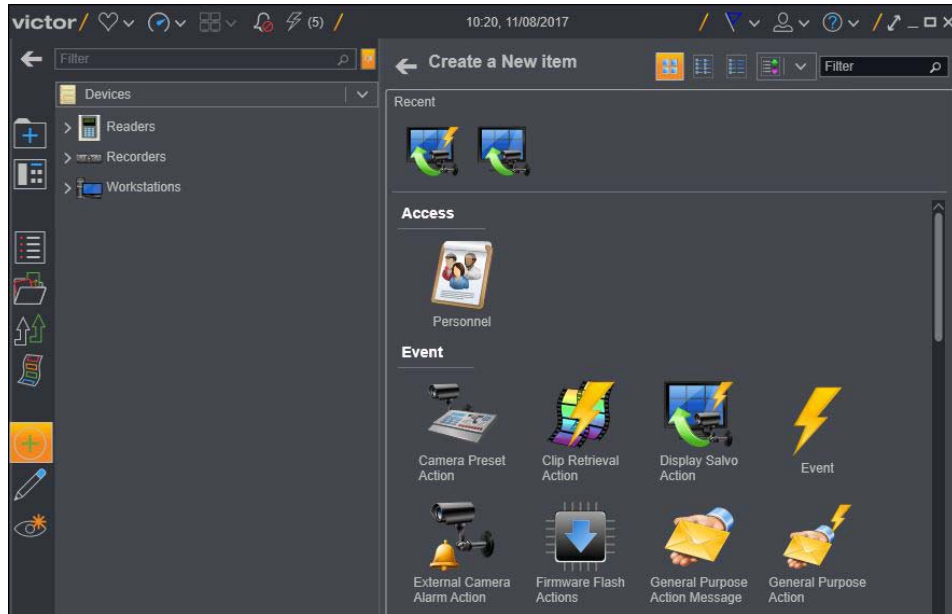
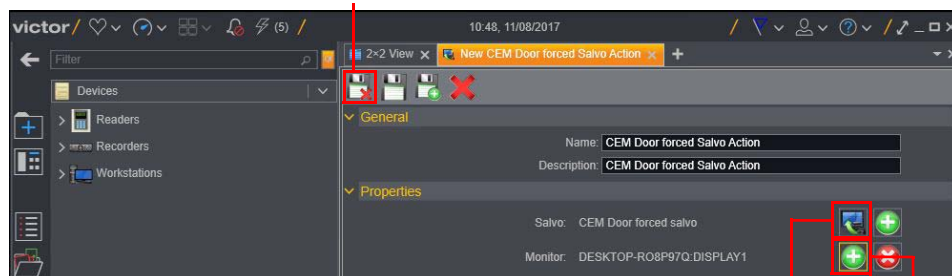


Figure 8 Adding a display salvo action

3. Configure the **General** parameters.

Save and close



Select from existing salvos

Add monitor

Figure 9 Configuring the display salvo action

4. From the **Properties** pane, click the **Select from existing salvos** icon to display the **Object Selector** window.
5. In the **Object Selector** window, click **Salvo**, and select a salvo from the Object pane.
6. Click **OK** to confirm selection and return to **New Salvo Action** interface.
7. Click the **Add monitor** icon to display the **Object Selector** window.
8. From the **Type** pane, select **Monitor**.
9. From the **Object** pane, select a display.
10. Click **OK**.
11. Click the **Save and Close** icon, as shown in Figure 9.

Creating an event

To create an event, complete the following steps:

1. Open **Victor Unified Client**.
2. Click the **Create item** icon, as shown in Figure 8, and select **Event**.
3. Configure the **General** parameters.

Save and close

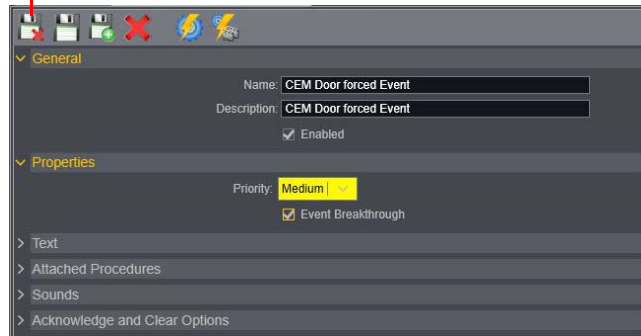


Figure 10 New Event interface

4. Configure the **Properties** parameters.
 - a. From the **Priority** list, select the priority to assign to the incoming alarm event. This establishes the importance assigned to the incoming alarm, so that the user can identify a critical alarm over a non-critical alarm.
 - b. If required, select the **Event Breakthrough** check box.
5. Click the **Save and Close** icon.

Note: CEM Systems does not support options in the Text, Sounds, and Acknowledgements panes. Refer to AD Victor documentation.

Setting up an event

To set up an event, complete the following steps:

1. Open **Victor Unified Client**.
2. Click the **System Configuration cog**, as shown in Figure 5.
3. Click **Events/Schedule Setup** to display the **Events/Schedule Setup** interface.
4. Drag a CEM reader from the **Device List** to the Devices pane.

Save and close

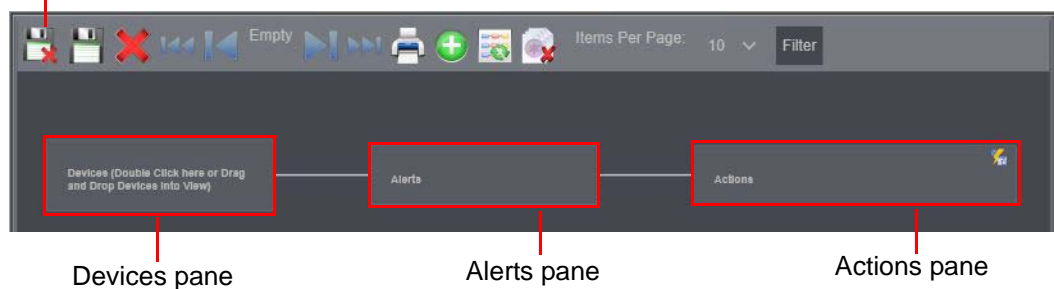


Figure 11 Event/Schedule Setup interface

Note: A reader is only visible in the Victor **Device List** if it has an External Systems alarm assigned to it.

5. Click the **Alert Type** icon, as shown in Figure 12.



Figure 12 Device added to the Events Setup interface

6. From the **Select Alerts** window, select alerts from the list, and click **Add Alerts**.
7. Click the **Action to Trigger** icon.

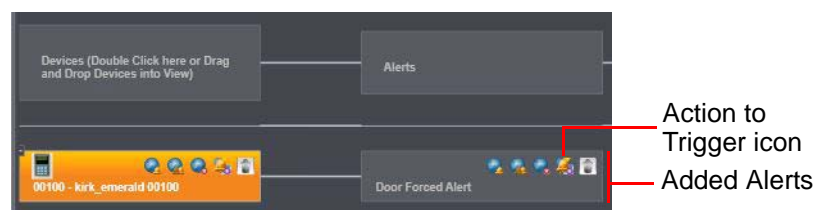


Figure 13 Alerts added to the Events Schedule Setup interface

8. Select an action type and select an action.
Note: You can add multiple types of actions to a single event.

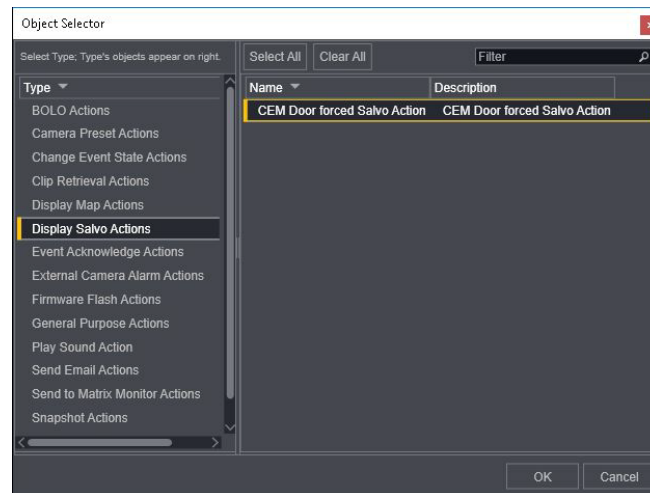


Figure 14 Selecting an Action to Trigger (Display Salvo Action)

9. Click **OK** to confirm selection of each **Action to Trigger**. The **Object Selector** window closes.



Figure 15 Actions added to the Events Setup interface

10. Click the **Save and Close** icon.

Testing the CEM Victor Integration

After you install an integration, you should conduct tests to confirm that the integration is working correctly. The following actions are examples of tests you can run:

- Configure and test alarms for your CEM reader.
- View camera alarm footage to confirm that the cameras are configured correctly.
- Add a CEM reader to a Victor map and confirm that the generated alarm is displayed on that map. For more information, see *Configuring Victor maps*.

Appendix B: Configuring Victor maps

Placing a CEM reader on a Victor map

To place a CEM reader on a Victor map, complete the following steps:

1. From the main **Victor Unified Client** interface, click the **Edit an existing item** icon, as shown in Figure 16.

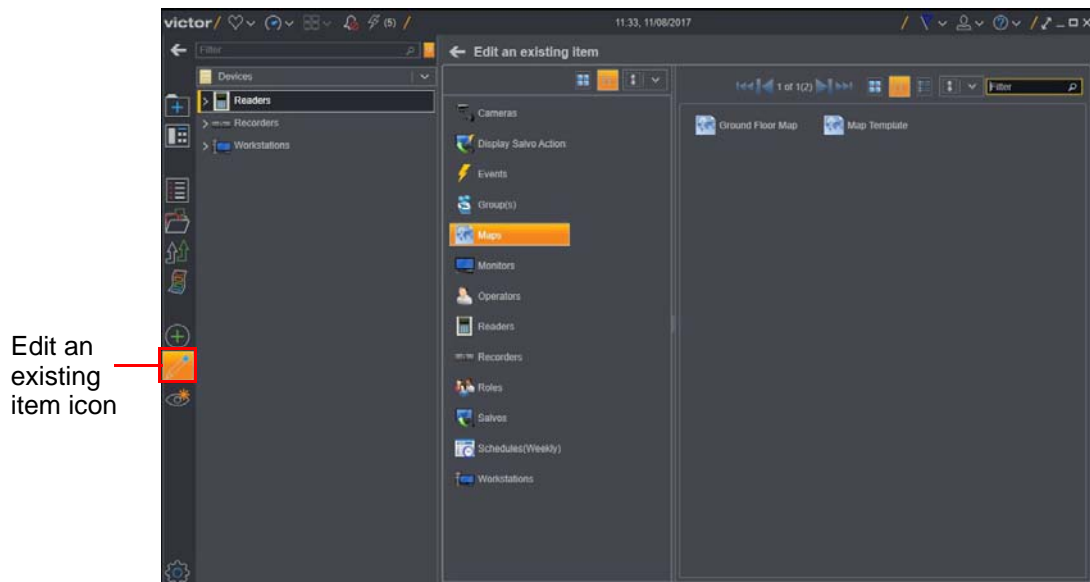


Figure 16 Opening a map

2. In the Edit an existing item pane, click **Maps**. All imported maps appear in the right pane.

Note: These instructions assume that at least one map has already been added. Refer to **Victor** documentation for instructions on how to add a new map.

3. To edit a map, left-click the map.

The Map editor interface is displayed, as shown in Figure 17.

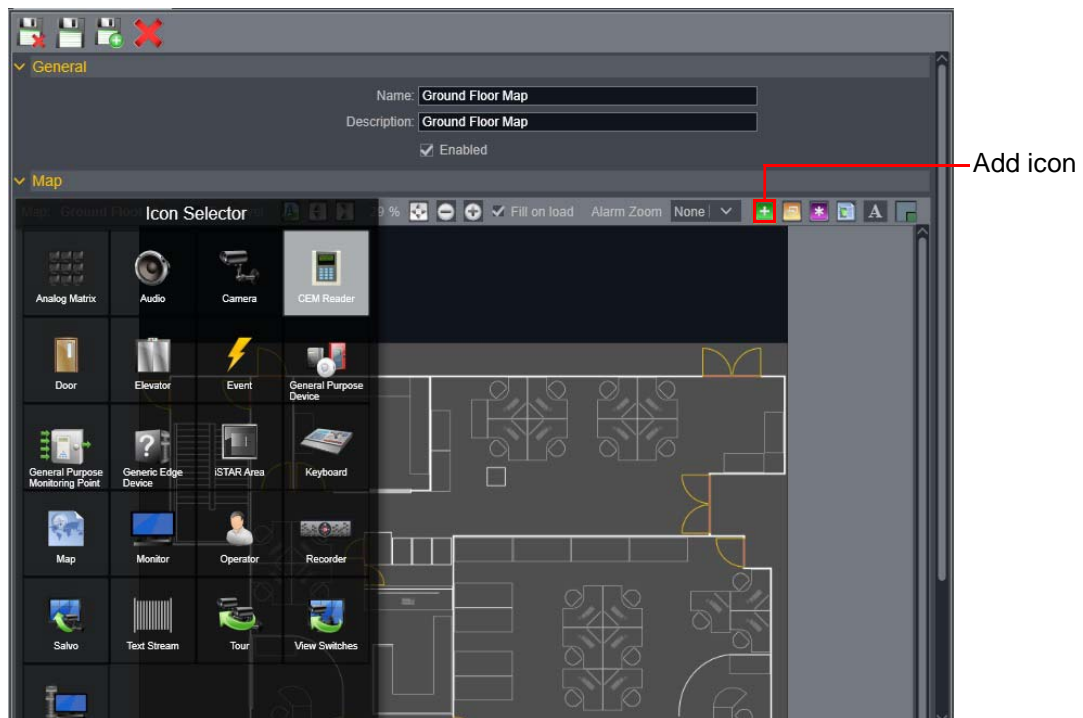


Figure 17 Map editor interface

4. In the Map pane, click the **Add** icon, as shown in Figure 17, to display the **Icon Selector** panel.
5. From the **Icon Selector** pane, select the **CEM Reader** icon.
6. Drag the **CEM Reader** icon to the appropriate position on the map.
7. Right-click the **CEM Reader** icon and select **Drop on map**. The **Icon configuration** pane opens.

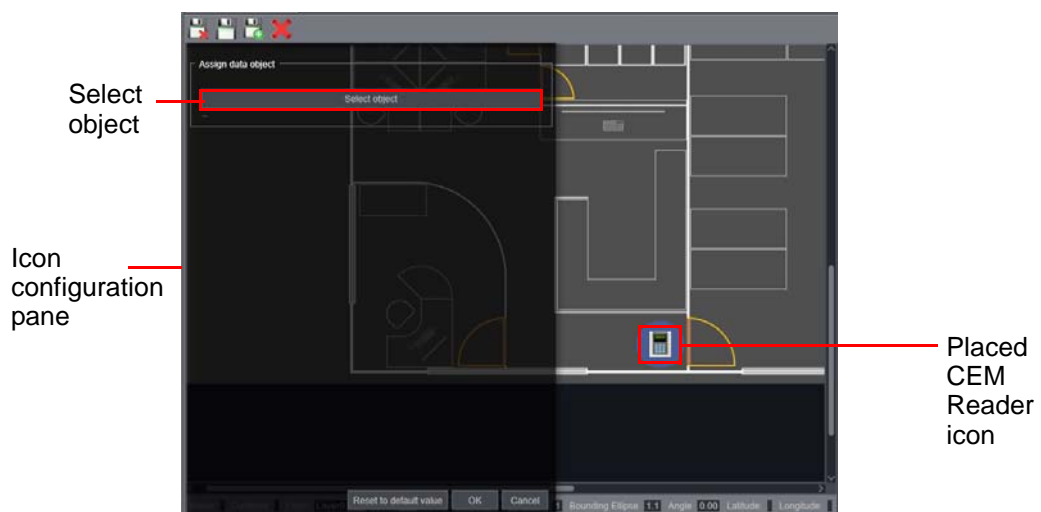


Figure 18 Icon configuration pane

8. In the configuration pane, click **Select object** to display the **Object Selector** window.
9. From the **Type** pane, select **Reader**.
10. From the list of devices on the right, select the reader to associate with the new icon.

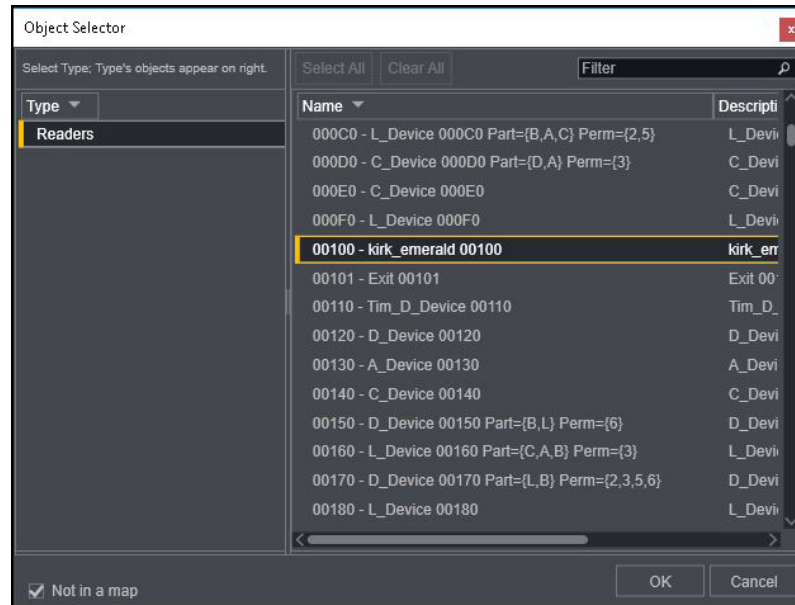


Figure 19 Selecting a device to associate with an icon

11. Click **OK**.
12. In the **Object configuration pane**, which is now expanded to display multiple options for the new icon, configure **Assign Images**, **Assign alerts**, **Assign dynamic text**, and **Assign left-click action**.

Note: To configure these icon options, refer to Victor documentation.

Appendix C: Upgrading the CEM Victor integration

Overview

To upgrade the CEM Victor integration, complete the following tasks:

1. Uninstall the previous version of the integration.
2. Install the released version of the **CEM Victor Integration Driver Service** to match the installed version of Victor.

Uninstalling the previous version of CEM Victor Integration

To uninstall a previous CEM Victor Integration version, complete the following steps:

1. Open the **Victor Server Configuration Application**.
2. Click the **Stop** button beside **CrossFire Framework Service**. This stops all services.
3. Close the **Victor Server Configuration Application**.
4. Uninstall **CEM Victor Integration Driver Service** from Windows **Control Panel**.

Installing new CEM Victor Integration

To install the new **CEM Victor Integration Driver Service**, complete the following steps:

1. Log on to a workstation that has **Victor Server Configuration Application** and **Victor Unified Client** installed on it.
2. Install the **CEM Victor Integration Driver Service** version to match the version of Victor that is installed.

Note: The **CEM Victor Integration Driver Service** must be licensed through the Victor Licensing application. Obtain a new license from American Dynamics Technical Support.

Upgrading the CEM Victor Integration on a client-only workstation

To upgrade the integration on a client-only workstation, complete the following steps:

1. Uninstall the **CEM Victor Integration Driver Service** from Windows **Control Panel**.
2. Install the new version of **CEM Victor Integration Driver Service**.

Appendix D: Additional tasks

Activating the Victor licence

You must obtain a Victor licence from CEM Systems and use AC2000 WEB to activate the licence.

Note: Refer to these steps only if your AC2000 server is older than version 7.1.

To activate the licence, complete the following steps:

1. From **AC2000 WEB**, click **Setup**, and **Licensing**.
2. Enter the 4-part licence code for this integration and click **Add**.
3. On the integrations list, ensure there is a **Yes** beside the name of the integration.

Note: If you do not have a Victor licence, contact CEM Support, quoting your **System ID** number to receive the **licence code**. The **System ID** is displayed at the top right of the Licensing application interface.

Applying a software update to a version of AC2000 older than 7.1

Important: Apply a software update to the AC2000 server using **AC2000 WEB** to integrate **External Systems** alarms with **Victor Unified Client**.

To apply the update, complete the following steps:

1. In a browser window, type the IP address of the CDC
2. Log on to **AC2000 WEB**.
3. Click **System** and **Software Update**.
4. Click **Browse**.
5. Navigate to the latest patch file **vic_filt80.cpio.bz2**.
6. Click **Open**.
7. Click **Upload**.

Enabling the CEM Victor Integration

Before using the CEM Victor Integration in the AC2000 system, you must enable it on the AC2000 server.

To enable the integration, complete the following steps:

1. Open an SSH terminal emulator, for example PuTTY, to open a connection with the AC2000 server.
2. Login as user: **root**

3. Type **l** in the command line and press **the Return key** to display the **Integrations menu**.

```
Integrations menu:
1)AD TVR
2)AD Hybrid DVR
3)AD NTLX and VE
4)Aimetis Symphony
5)Airport Edition
6)Avigilon
7)BACnet or MZX/Fireclass Fire panels
8)Bosch
9)Commend ICX
10>Contact ID Interface
11)DSC PowerSeries
12)FFTCams3
13)Galaxy
14)Genetec Security Center
15)Genetec Omnicast
16)IndigoVision SMS4
17)MatriVideo
18)Milestone
19)Mobotix
20)Morpho BioBridge Support
21)Morpho Fingervein
22)DSC Neo Interface
23)Otis Lift Control
24)Pelco
25)Salto SHIP
26)Satel Integra
27)Schindler
28)Simplex Fire Panel
29)LDAP Single Sign-on
30)Victor
31)emerald Logo Change
32)exacqVision
33)API
34)Portables subsystem
35)Audio Recording
Select Integration to Set Up(or X to eXit):
```

Figure 20 AC2000 server Integrations menu

4. Type the option number that corresponds with **Victor**, for example, 30 as shown in Figure 20, and press **the Return key**.
5. Press **the Return key**.
6. Type **x** and press **the Return key** to exit the integrations menu.
7. Type **l** and press **the Return key** to log out of the terminal emulator session.